

# HUNTERS<sup>®</sup>

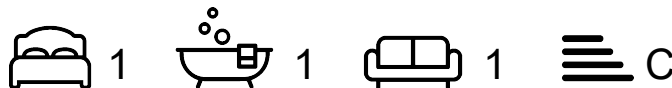
HERE TO GET *you* THERE



## Gay Lane

Otley, LS21 1BR

£795 Per Calendar Month

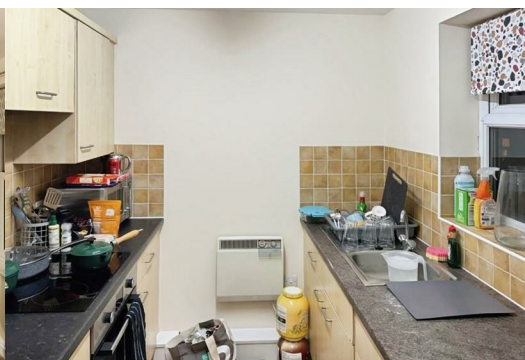


This apartment is perfect for a single person or a couple looking for a modern and convenient living space. The open plan layout of the lounge/diner galley kitchen creates a spacious and sociable area for entertaining guests or relaxing after a long day. The bedroom is a good size with plenty of natural light, making it a comfortable and inviting space to unwind in.

Allocated parking space to the rear of the property.

Overall, this first floor apartment offers a comfortable and convenient living space in a popular development. Don't miss out on the opportunity to make this your new home!

Otley is a thriving market town in the Wharfe Valley offering a wide range of amenities, shops, supermarkets and traditional pubs. The town centre bus station has regular bus services to Leeds, Bradford and Harrogate, and in addition, there is a railway station at nearby Menston offering mainline links. For those travelling further afield, Leeds/Bradford International Airport is in nearby Yeadon.



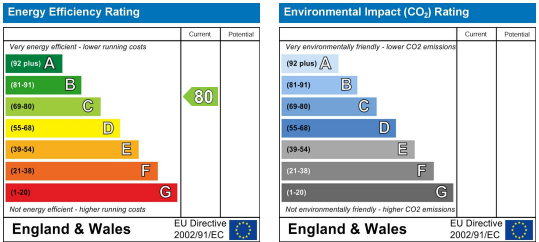
Area Map



Floor Plans



Energy Efficiency Graph



These particulars are intended to give a fair and reliable description of the property but no responsibility for any inaccuracy or error can be accepted and do not constitute an offer or contract. We have not tested any services or appliances (including central heating if fitted) referred to in these particulars and the purchasers are advised to satisfy themselves as to the working order and condition. If a property is unoccupied at any time there may be reconnection charges for any switched off/disconnected or drained services or appliances - All measurements are approximate. **THINKING OF SELLING?** If you are thinking of selling your home or just curious to discover the value of your property, Hunters would be pleased to provide free, no obligation sales and marketing advice. Even if your home is outside the area covered by our local offices we can arrange a Market Appraisal through our national network of Hunters estate agents.